

TRAP PLACEMENT

Using A Mosquito Magnet is as easy as 1,2,3!

1. Determine the direction of the prevailing wind.
2. Stand in the center of the area you are trying to protect and look toward the prevailing wind.
3. Recommended placement is 30-40 feet from this area and within 5-6 feet of ground cover (i.e.: bushes, flowerbeds, tree line, marshland).
4. It is recommended that the trap be placed in the shade.



FOR MORE TRAP PLACEMENT SUGGESTIONS CALL TECH SUPPORT AT 877-699-8727

Accessories



Octenol

A set of added attractant cartridges. Use one every 21 days to enhance your insect catch.



MagNets

A set of replacement nets, which should be emptied or changed every three weeks according to catch rates.



Call toll-free 1-877-699-TRAP

American Biophysics Corporation
2240 South County Trail
East Greenwich, RI 02818-1536
Phone: 401-884-3500
Fax: 401-884-6688
www.mosquitomagnet.com



Mosquito Magnet Tank Cover

A weather-resistant propane tank cover that dresses up the tank, while helping to minimize corrosion, and protect against weather damage.

Please contact American Biophysics Corporation if you experience any problems with your Mosquito Magnet 877-545-5737



MOSQUITO MAGNET™

American Biophysics Corporation
2240 South County Trail
East Greenwich, RI 02818-1536
1-877-699-TRAP
www.mosquitomagnet.com

Assembly

Starting Instructions

Trap Placement

Helpful Suggestions

ADVISEMENT

Do not hook up to permanent installation without contacting manufacturer for instructions. Changing hoses, connectors or regulators may cause the trap to fail and void the warranty.



US Patents: No. 6,145,243, No. 6,286,249
AU Patent No. 735,984, NZ Patent No. 335035

BASE ASSEMBLY

One Mosquito Magnet consists of the following:

- (1) Metal Base Assembly
- (1) Plastic Main Housing
- (1) Power Pack

Complete assembly instructions are located in the Power Pack box. Should any components be missing, please contact us via phone, fax or E-mail.

Base assembly contains the following:

Qty	Description	Part No.
1	Base Frame & support assembly	0805
1	Base pipe assembly	P0008
4	5/16" Washer	P0007
4	5/16"-18 Nyloc Nuts	0932
1	Axle	P0030
2	Wheels	P0005
2	3/8" Washer	P0031
2	3/8" ID Palmut	1010
1	Base foot	P0034
2	1/4" Washer	P0033
2	1/4" -20 Nyloc Nuts	P0032
6	1/4" -20 x 3/4" LG Button Screw	

Housing assembly contains the following:

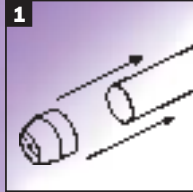
Qty	Description	Part No.
1	3/8"x2.75" Lg Skt Cap Screw	P0003
1	3/8" - 16 Nyloc Nut	P0004
1	3/8" Washer	P0005
1	Plastic Main Housing	
4	Allen Wrenches	
2	10-32 x 5/8" Lg Skt Cap Screw For Power Pack Assembly	P0001
2	#10 Washers	P0002

Power Pack assembly contains the following:

Qty	Description
1	Power Pack
2	Replacement Nets
1	Octenol Cartridge
1	Information Package

Tools needed for assembly:

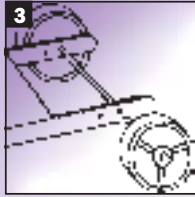
- Standard ratchet set or adjustable wrench
- Hammer
- Allen wrenches (included)



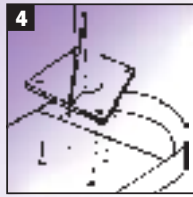
Wheel and axle assembly. Attach palmut to one end of axle. Slide nut over axle. Invert axle so that palmut is on a solid, flat surface. Tap gently into place.



Slide axle through one wheel with palmut to outside. Outside of wheel is identified by rib design. Once axle is through hub on wheel, slide wheel onto axle.



Slide washer over axle, place axle through back holes of base. Place second washer on axle then slide wheel onto axle and add palmut. Turn completed assembly on side so that last wheel is upright. Tap slightly to secure palmut.

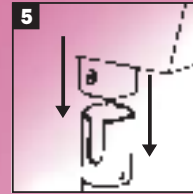


Base Pipe Assembly. Align holes of base pipe to holes on base. Holes are aligned differently to assure placement of front and back.

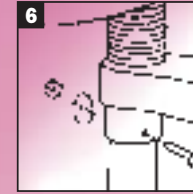
Using 5/16" bolts provided, place through four alignment holes with heads towards top. From bottom, add four 5/16" washers first, then secure nuts tightly.

IMPORTANT: When treating lawns with lime or lawn regenerative compounds the Mosquito Magnet must be shut down to avoid clogging the orifice and damaging the trap.

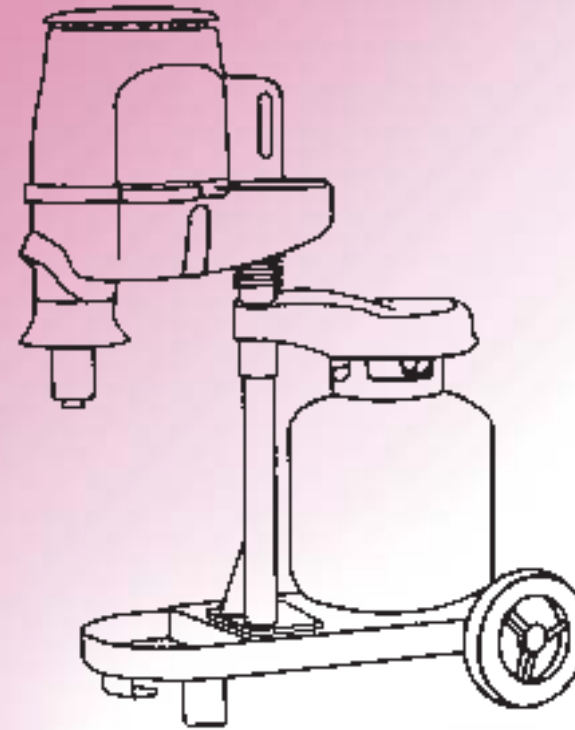
HOUSING ASSEMBLY



Slide Main Housing onto Base Pipe Assembly. Align holes in Main Housing with holes in Base Pipe.



Slide 3/8" screw through hole and attach 3/8" washer and nut, tighten securely.



HELPFUL SUGGESTIONS

- Store Octenol in a cool, dry place.
- Octenol cartridge does not disintegrate. Smell will dissipate over time.
- Clean net periodically for tree pollen or debris.
- To move or relocate the Mosquito Magnet be sure to:
 - A: Turn off gas
 - B: Disconnect tank
 - C: Wait one hour to allow trap to cool
 - D: Relocate
- Never spray insecticide in or around trap
- If using lime or lawn regenerative compounds, be sure to shut down the Mosquito Magnet first.

IMPORTANT

Do not move trap with tank connected.

POWER PACK • NET • ATTRACTANT ASSEMBLY

FOR BEST RESULTS

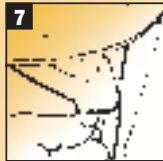
- Door must be tightly secured to maximize catch.
- Propane tank should be refilled every 21 days.
- Never spray insecticide in or around trap.
- Empty bug bag every 3 weeks. Replace bug bag every 3 months.
- Attractant must be replaced every 3 weeks.

WARNING:

For outdoor use only, never use indoors.

STARTING INSTRUCTIONS

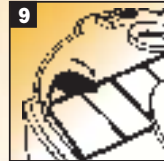
1. Shake Power pack front to back and side to side.
2. Fully depress the gas valve (silver button) for at least 5 seconds, then push the red ignitor button every 5 seconds for 30 seconds, while simultaneously holding in the gas valve. Continue to hold the gas valve for an additional 3 minutes, then slowly release.
3. During this time the black thermal dot has turned red (fans will begin within 5 to 10 minutes). To observe, look underneath the power pack.



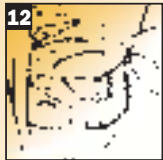
Latch is located under tan cover on top of trap. Slide latch out to open housing door. Reverse to close door. Latch must be secured before moving trap. Door must be securely closed to ensure proper vacuum.



To open the main housing, grab by handles provided, with two hands lift up and rotate to side. To close, gently push down for a secure fit.



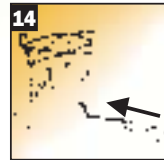
Rotate camlock 90 degrees clockwise to remove Bug Bag Frame from main housing.



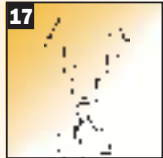
Slide Bug Bag Frame into Main Housing. Slide two tabs on side of frame into slots on housing. Note: As the frame is in place, the net will open.



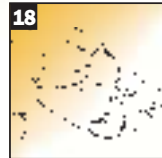
Once Bug Bag Frame is in place, turn cam lock to secure net into position.



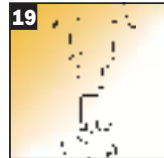
Slide Power Pack into correct alignment with mounting holes located in housing. Use two #10 washers and #10 screws to secure. Insert washer, then screw from top.



With a flat head screwdriver, remove the cover from the bottom of the attractant carrier, located in the CO₂ chamber.



Peel cover from Octenol cartridge.



Slide octenol cartridge into the attractant carrier.

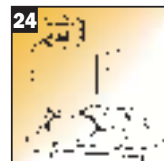
NOTE: BEFORE PROCEEDING TO NEXT STEPS, READ TRAP PLACEMNET SECTION ON BACK PAGE.



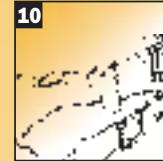
To move the Mosquito Magnet, make sure that tank is not connected to the trap. Remove propane tank from base. Place foot on back of base assembly, grab handle.



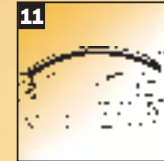
Tilt trap towards the back until front of trap is off the surface. Continue to hold handle and pull trap to desired location.



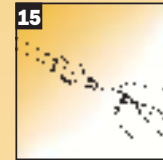
Place propane tank into cradle on Base. Make sure tank sits level in cradle.



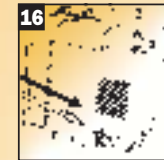
Place net onto Bug Bag Frame. Slide edge of net into slots on Bug Bag Frame.



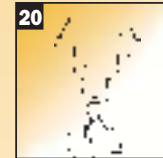
Attach elastic cord from net around Bug Bag Frame. Note: Do not discard Bug Bag Frame when replacing net.



Remove green vinyl protective cap from quick-disconnect fitting on the hose inside the main housing.



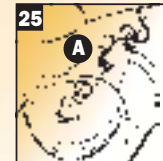
Attach brass tube end to brass fitting on Power Pack; snap-in. Click indicates connection. Reverse step 9 to close housing.



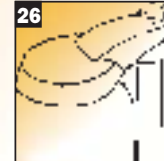
Screw the cover back onto the attractant carrier using a flat head screwdriver.



Octenol should be replaced when refilling propane tank (every 21 days). Note: Avoid touching exposed cartridge. Wash hands thoroughly upon contact. Octenol should be kept out of reach of children and pets.



Remove green cap from regulator. Attach regulator hose assembly to propane tank. Note: propane assembly nuts are threaded opposite of normal threads. Turn counter-clockwise to secure. Note: Red cap on propane regulator (A) should be facing to the outside to allow for plastic hood to cover tubing and assembly.



Lift and turn plastic hood to cover propane tank and hoses. Note: Rock completed trap gently, front to back, to settle platinum beads in Power Pack.

SHUTTING DOWN THE MOSQUITO MAGNET

To shut down your Mosquito Magnet, simply close the valve of the propane cylinder and allow the burner to expire. The trap will continue operating for approximately one half hour after the propane is discontinued, as long as the burner remains warm enough to keep the fans running. The Mosquito Magnet should not be moved or handled during this time, as its outer surfaces may be hot. After the Mosquito Magnet has cooled sufficiently, it may be stored for the off-season. If the propane cylinder is to be disconnected, the protective plastics should be replaced on the nozzle end. Any open octenol packages should be removed and discarded if the trap is to be stored indoors. The net should be discarded prior to storing the Mosquito Magnet.

MOSQUITO AND SAND FLY WEIGHTS & MEASURES

Mosquitoes

Weight

1 Gram (after desiccating in the net) = 2415 mosquitoes
1 Ounce (weight) = 68,465 mosquitoes

Volume

1 liter (1000 ml or 1000 cubic centimeters) = 53,675 mosquitoes
1 oz (liquid) = 1,588 mosquitoes
1 Tablespoon = 794 mosquitoes
1 cubic inch = 880 mosquitoes
1 inch of depth in the net = 37,180 mosquitoes

Sand Flies:

Weight

1 gram (after desiccating in the net) = 45,450 culicoides
1 ounce (weight) = 1,288,635 Culicoides

Volume

1 Liter = 2,507,000 Culicoides
1 Milliliter (1 cc) = 2,507 Culicoides
1 Ounce (liquid) = 74,140 Culicoides
1 Tablespoon = 37,070 Culicoides
1 Cubic inch = 41,000 Culicoides
1 Inch of depth in the net = 1,732,000 Culicoides

CANADIAN PROPANE REGULATIONS

Please Retain these Instructions For Future Use.

1. The Mosquito Magnet area should be kept clear and free from combustible materials, gasoline and other flammable vapours and liquids.
2. The flow of combustion and ventilation air should not be obstructed.
3. Periodically wipe down the outside of the Mosquito Magnet with a clean, water damp cloth.
4. Installation must conform with local codes, or in the absence of local codes, with the National Fuel Gas Code, ANSI Z223.1 or CAN/CGA B 149, Natural Gas Installation Code or Propane Installation Code.
5. The LP-gas cylinder is in accordance with the US Dept. of Transportation (DOT) or the National Standard of Canada, CANICSA-B339, Cylinders Spheres and Tubes for the Transportation of Dangerous Goods.
6. Inspect the hose before each use of the Mosquito Magnet.
7. If it is evident that there is excessive abrasion or wear, or the hose is cut, it must be replaced prior to the Mosquito Magnet being put in operation. A replacement hose assembly will be supplied by the manufacturer.
8. The Mosquito Magnet will accommodate up to a 20 lb. LPG tank.
9. To disconnect the propane tank from the trap press the release tab on the quick disconnect.
10. To check for a gas leak, apply dishwasher liquid soap with a small brush over the connection. If you see bubbles there is a gas leak.
11. Adequate ventilation is required.
12. It is recommended that the trap be placed on level ground for proper performance.
13. If the Mosquito Magnet is not in use, the gas must be turned off at the supply cylinder.
14. Storage of the Mosquito Magnet indoors is permissible only if the cylinder is disconnected and removed from the trap.
15. Cylinders must be stored outdoors out of the reach of children and must not be stored in a building, garage or any other enclosed area.
16. The pressure regulator and hose assembly supplied with the Mosquito Magnet must be used. Replacement pressure regulators and the hose assemblies must be those specified by the Mosquito Magnet manufacturer.
17. The propane cylinder must include a collar to protect the cylinder valve.
18. The cylinder supply system must be arranged for vapor withdrawal.
- 19 (a). Do not store a spare LP-gas cylinder under or near this appliance.
- 19 (b). Never fill the cylinder beyond 80 percent full
- 19 (c). If the information in "(a)" and "(b)" is not followed exactly, a fire causing death or serious injury may occur.

GENERAL HAZARD WARNING!

FAILURE TO COMPLY WITH THE PRECAUTIONS AND INSTRUCTIONS PROVIDED WITH THIS APPLIANCE, CAN RESULT IN DEATH, SERIOUS BODILY INJURY AND PROPERTY LOSS OR DAMAGE FROM HAZARDS OF FIRE, EXPLOSION, BURN, ASPHYXIATION, CARBON MONOXIDE POISONING, AND/OR ELECTRICAL SHOCK.

IF YOU NEED ASSISTANCE OR APPLIANCE INFORMATION SUCH AS AN INSTRUCTIONS MANUAL, LABELS, ETC. CONTACT THE MANUFACTURER.

MISE EN GARDE!

Le non-respect des mesures de sécurité et des instructions fournies avec cet appareil peut entraîner la mort, des blessures graves ou des dommages matériels causés par un incendie, une explosion, des brûlures, l'asphyxie, une intoxication au monoxyde de carbone et (ou) des chocs électriques.

Pour plus de renseignements sur les instructions ou l'appareil ou pour obtenir la notice d'instructions, des étiquettes, etc., communiquer avec le fabricant.

WARNING!

FIRE, BURN, INHALATION, AND EXPLOSION HAZARD. KEEP SOLID COMBUSTIBLES, SUCH AS BUILDING MATERIALS, PAPER OR CARDBOARD, FEATHERS, STRAW AND DUST A SAFE DISTANCE AWAY FROM THE APPLIANCE AS RECOMMENDED BY THE INSTRUCTIONS. NEVER USE THE APPLIANCE IN SPACES WHICH CONTAIN OR MAY CONTAIN VOLATILE OR AIRBORNE COMBUSTIBLES, OR PRODUCTS SUCH AS GASOLINE, SOLVENTS, PAINT THINNER, DUST PARTICLES OR UNKNOWN CHEMICALS.

AVERTISSEMENT!

Risque d'incendie, de brûlure et d'explosion. Ne pas inhaler. S'assurer que des combustibles solides comme les matériaux de construction, le papier ou le carton, les couvre-joints, la paille et la poussière sont à une distance sécuritaire de l'appareil, conformément aux instructions. Ne jamais utiliser l'appareil dans des endroits qui contiennent ou peuvent contenir des combustibles volatiles ou en suspension ou des produits comme de l'essence, des solvants, des diluants pour peinture, des particules de poussière ou des produits chimiques inconnus.

CANADIAN PROPANE REGULATIONS

1. For outdoor use only. If stored indoors, detach and leave cylinder outdoors.
Pour utilisation à l'extérieur seulement. Si l'appareil est entreposé à l'intérieur, enlever les bouteilles et les laisser à l'extérieur.
2. Minimum clearance from sides and back of unit to adjacent combustible construction is 16 inches.
Dégagement minimal à respecter entre les côtés et l'arrière de l'appareil et une construction combustible adjacente située au-dessus de la partie 16 inches.
3. CAUTION: The gas pressure regulator provided with this outdoor appliance must be used. This regulator is set for an outlet pressure of 10 pounds per square inch. (The outlet pressure specified by the manufacturer.)
MISE EN GARDE: Le régulateur de pression de gaz prévu avec cet appareil de cuisson à gaz pour l'extérieur doit être utilisé. Ce régulateur est réglé pour une pression de sortie 10pouces per square inch. (La pression de sortie spécifiée par le fabricant)
4. The gas supply must be turned off at the LP-gas supply cylinder when this outdoor gas appliance is not in use.
L'alimentation du gaz doit être fermée à la bouteille de gaz de pétrole liquéfié, lorsque cet appareil de cuisson extérieur n'est pas utilisé.
5. The LP-gas cylinder must be disconnected when this outdoor gas appliance is not in use.
La bouteille d'alimentation en gaz de pétrole liquéfié doit être débranchée, lorsque cet appareil de cuisson extérieur n'est pas utilisé.

WARNING!

THIS APPLIANCE MUST NOT BE WASHED. USE OF A PRESSURE WASHER, WATER OR LIQUID CLEANING SOLUTION ON THIS APPLIANCE CAN CAUSE SEVERE PERSONAL INJURY OR PROPERTY DAMAGE DUE TO WATER AND/OR CLEANING SOLUTION:

A. IN ELECTRICAL COMPONENTS, CONNECTIONS AND WIRES CAUSING ELECTRICAL SHOCK OR COMPONENT FAILURE.

B. ON GAS CONTROL COMPONENTS CAUSING CORROSION WHICH CAN RESULT IN GAS LEAKS AND FIRE OR EXPLOSION FROM THE LEAK.

APPLIANCE MUST BE CLEANED WITHOUT BEING SUBJECTED TO LIQUID SPRAY OR EXCESSIVE WETTING.

AVERTISSEMENT!

Ne pas laver cet appareil. L'utilisation d'un appareil de nettoyage à pression, d'eau ou d'une solution nettoyante liquide sur cet appareil peut entraîner des blessures graves ou des dommages causés par l'eau et (ou) la solution nettoyante :

A. qui entre en contact avec des composants, des raccordements et des fils électriques ce qui présente des risques de chocs électriques ou de défauts ;

B. qui entre en contact avec les composants d'acheminement du gaz et qui cause de la corrosion qui peut entraîner des fuites de gaz ou une explosion.

Nettoyer l'appareil sans pulvérisation liquide ou sans trop le mouiller.

WARNING!

If you smell gas:

1. Shut off gas to the appliance
2. Extinguish any open flame
3. If odor continues, immediately call your fire department or gas supplier

1. Do not store or use gasoline or other flammable vapors and liquids in the vicinity of this or any other appliance.

2. An LP cylinder not connected for use shall not be stored in the vicinity of this or any other appliance.

AVERTISSEMENT

S'il y a une odeur de gaz:

1. Coupez l'admission de gaz de l'appareil
2. Éteindre toute flamme nue.
3. Ouvrir le couvercle.
4. Si l'odeur persiste, appeler immédiatement votre compagnie de gaz ou votre département des incendies.

1. Ne pas entreposer ni utiliser de l'essence ni d'autres vapeurs ou liquides inflammables dans le voisinage de l'appareil, ni de tout autre appareil.
2. Une bouteille de propane qui n'est pas raccordée dans le voisinage de cet appareil ou de tout autre appareil.



Mosquito Magnet Models:

Mosquito Magnet Pro
1000MM-P-Pack
MM-Base

Mosquito Magnet
2000MM-P-Pack
2000MM-Top
MM-Base